

The World's Most Trusted Industrial Torque and Tension Systems

# ACCESSORIES

Designed with the Highest Quality Standards



The variety of our patents, as well as awards received at Innovation and Quality Events in the USA, Europe and Japan, speaks to the high standards that HYTORC® provides.

HYTORC® focuses on our customers' individual needs. We design and manufacture special accessories for all jobs and industries. HYTORC®'s accessories are of the highest quality to insure job safety and efficiency.

## QUALITY YOU CAN RELY ON

Not only does our broad range of superior and award-winning hydraulic torque/tension wrenches meet the high industrial quality standards, but so does our accessory product line.

HYTORC®'s accessories are designed to last, so your job never gets held up. We use the best materials and state of the art manufacturing processes.



OPEN SOCKETS



LOW CLEARANCE HEX SOCKETS



ALLEN SOCKETS



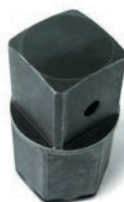
LOW CLEARANCE ALLEN DRIVES



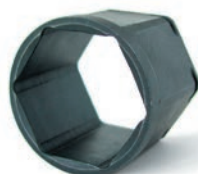
DIRECT DRIVE SOCKETS  
DIRECT DRIVE ALLENS



EDGE ALLEN DRIVES



SQUARE DRIVE HEX ADAPTER



LOW CLEARANCE HEX INSERT



REACTION SLEEVE



SQUARE DRIVE REDUCER

**24 Hour SERVICE**

**800-FOR-HYTORC**

[www.hytorc.com](http://www.hytorc.com)

**HYTORC®**  
Since 1968

333 RT. 17 N. MAHWAH, NJ 07430



**REACTION FIXTURES**

Standard & Customized Solutions for Every Type of Application.



**ADAPTERS & REDUCERS**

Hex-Adapters, Square Adapters, Standard and Custom-made.



**SOCKETS**

Male and Female, Hex and Allen Sockets.



**BACK-UP WRENCHES**

No more locked or falling backup wrench. Instant manual unlocking.



**EXTENSIONS**

Job Specific and Custom Drive Extensions.



**OFFSET LINK**

Offset links For Limited Clearance. Perfect for plate heat exchangers.



**JACKSCREW NUT ADAPTER**

Customized Solutions for Every Type of Application.



**FROG BOLT ADAPTER**

Reduce Job Time while Increasing Safety and Tool Life!



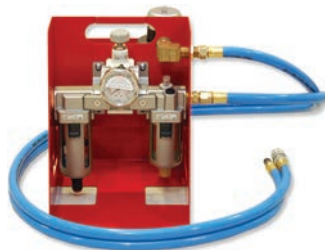
**INLINE BOLTING SYSTEM**

Adjustable Reaction fixtures.



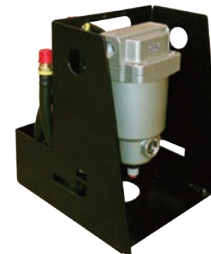
**HYDRAULIC HOSES**

Twinline Hi-Visibility "Day Glow" Hose. 10,000 PSI Hydraulic Hose with a 4:1 Safety Factor.



**FRL UNIT**

Filter/Regulator/Lubricator. Reduces 95% of Operational Noise.



**AIR DRYER**

Removes moisture from air lines. For use on all air powered equipment.